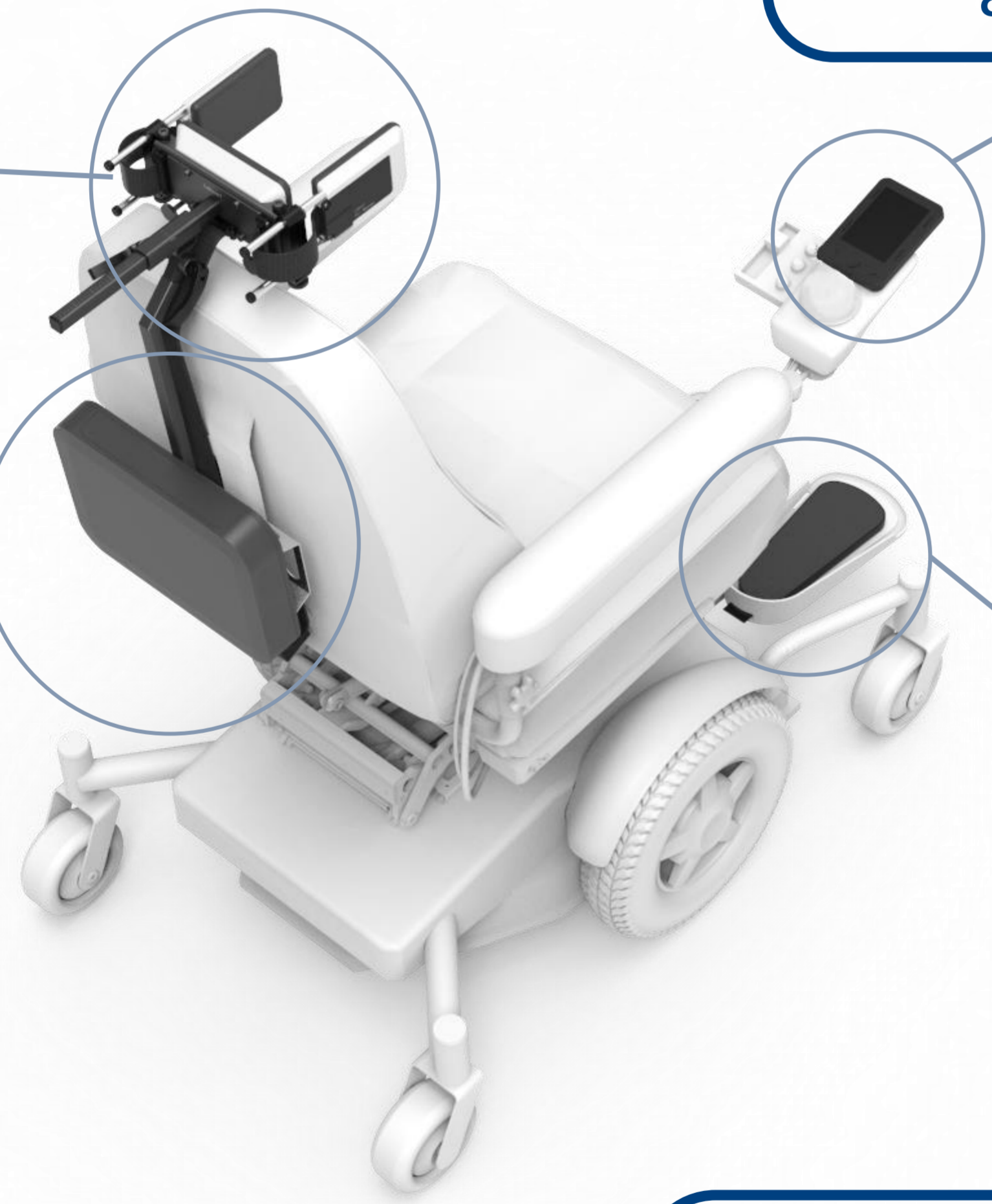


Cutting-edge mobility solution



Headset with **high-tech touch sensors** to steer and move forward

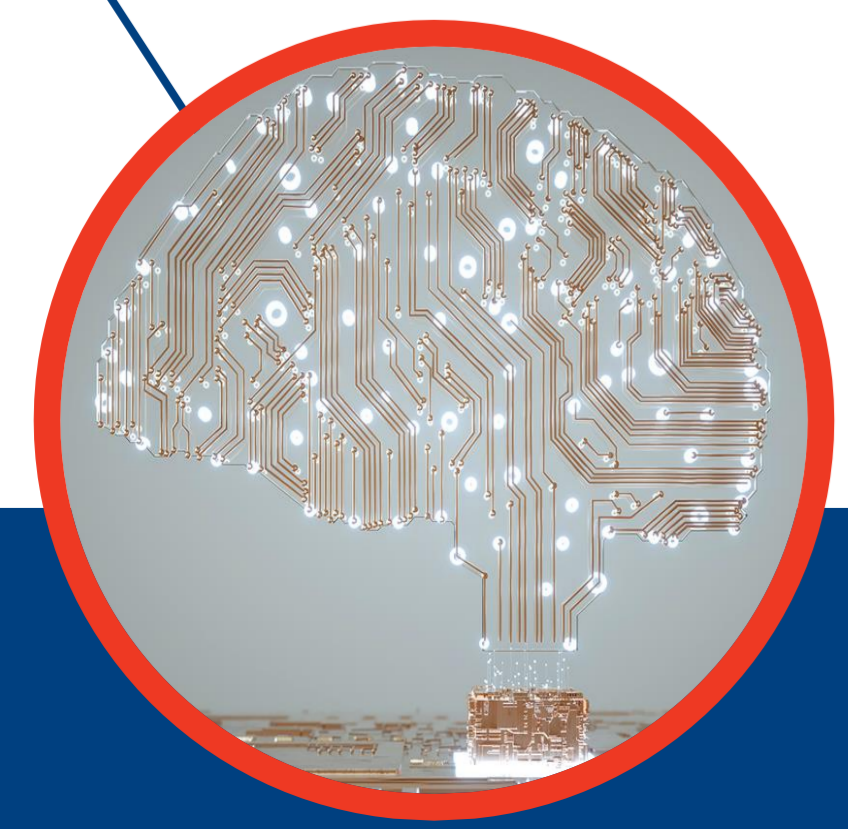
Omni2 offering access to **assistive technology** and leisure



The electronic unit **adapts the steering** to the user



Optional foot pads with **high-tech touch sensors** to move forward or to steer



For more information, product demonstrations, assessments, training or support, feel free to reach out:

CoMoveIT NV
Baron Ruzettelaan 5 / 1.1
8310 Assebroek
Belgium
+ 32 477 88 01 75
info@comoveit.com



www.comoveit.com

CoMoveIT Smart

Intelligent Wheelchair Steering

Towards Independent Mobility & Better Quality of Life for people with Cerebral Palsy, MS, ALS, Tetraplegia



Empowering freedom with revolutionary steering

Head only or head-foot touch pads

Continuous and automatic adaptation to the user

Intuitive and comfortable driving

Easy learning, therapeutic effect

Auto-calibration at every start

Interface access to peripherals, computer and gaming



CoMoveIT

"My son Levi was born with Cerebral Palsy. Due to a lack of motor control and elevated muscle tension he can't drive a wheelchair with a joystick. With this head-foot control we're in a completely different situation.

With CoMoveIT Smart, Levi can use his head to steer left and right. Using the foot plates, he's able to move forward.

Thanks to the built-in sensors and artificial intelligence in the head array and foot plates, the system automatically adapts to Levi's movements and input. It's remarkable how relaxed he's driving around now, the muscles in his arms and legs are totally free of tension."

Carl, father of Levi



Evidence-based top-notch technology

Cutting-edge sensors & smart algorithms

Generally reimbursed

Compatible with major wheelchair brands

Hassle-free fitting and maintenance

MDR/CE/UKCA compliant

Free of programming

Expandable with extra buddy buttons

