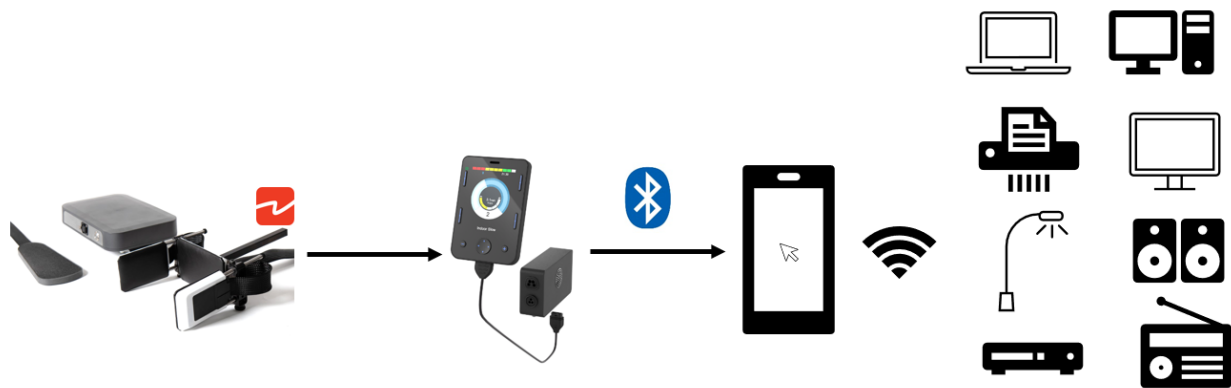


- Control Multiple Peripherals from one Device

An ideal way to control multiple peripherals from one device such as a smartphone or tablet is to download on your tablet the remote-control apps dedicated to your device. For example, smart TVs, smart lights, etc. have their own application.

Using CoMoveIT Smart to control your smartphone or tablet as indicated in Bluetooth Control for Android and Bluetooth Control for iOS allows you to have access to your peripheral devices.



Remark: Your smartphone or tablet must be connected to the same wifi network as your peripheral devices.