

- **Bluetooth Control for iOS**

Full control with CoMoveIT Smart via Bluetooth. The iOS-based device is fully controlled by CoMoveIT Smart via the Bluetooth of Omni2.



Full Control









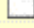
Certain CoMoveIT Smart commands via Omni2 can be assigned to iOS commands. The Omni2 commands are given below.

Time-related deflections (nudges) of the CoMoveIT Smart in each of the four directions:

- Forward Short
- Reverse Short
- Left Short
- Right Short
- Forward Medium
- Left Medium
- Right Medium
- Forward Long
- Reverse Long
- Left Long
- Right Long

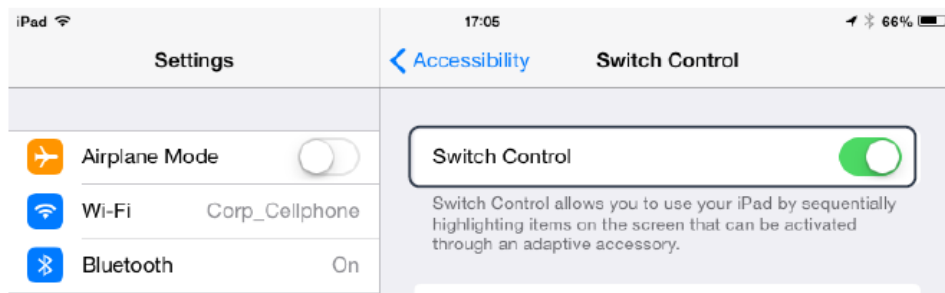
The iOS function can be configured using the Rnet Programmer under **iDevice1** or **iDevice2** Tab. Set the **Mode** to “**Switch Control**” and set the desired **Short Nudge Time**, **Medium Nudge Time**, **Long Nudge Time**.

The timings associated with the nudges are programmable. The Short Nudge Time can be adjusted between 0.1s and 2.0s, in steps of 0.1s. The Medium Nudge Time can be adjusted between 0.5s and 3.0s, in steps of 0.1s. The Large Nudge Time can be adjusted between 2.9s and 5.0s, in steps of 0.1s. Time is set to **0**, the Nudge Function is disabled.

iDevice1	
 VoiceOver	
 Action Beeps	Yes
 Deflection Beeps	No
 Short Nudge Time	0.5 s
 Medium Nudge Time	2.0 s
 Long Nudge Time	3.0 s
 Device Name	R-net iDevice 1
 Mode	Switch Control
 Screen Graphic	Computer

There is a certain procedure on your iOS device to enable the Switch Control.

In your iOS device go to **Settings** menu, select **General > Accessibility**. Set **Switch Control** to On. Then select **Switches, External**, and select **Add New Switch**.



Switch Control operates by highlighting sections within the application window. Various commands are then used to navigate the sections and to select individual applications.

The functions that can be controlled on the iOS device are the following: Home Button, App Switcher, Select Item, Move To Next Item, Move To Previous Item, Stop Scanning, Resume Auto Scanning, Increase Volume, Decrease Volume.

SWITCHES	
Forward Long	Resume Auto Scanning >
Forward Medium	App Switcher >
Forward Short	Select Item >
Left Medium	Decrease Volume >
Left short	Move To Previous Item >
Reverse Long	Stop Scanning >
Reverse Medium	App Switcher >
Reverse Short	Home Button >
Right Medium	Increase Volume >
Right short	Move To Next Item >
Add New Switch...	>

One switch should be assigned to the Select Item action and another to the Move To Next Item action, to ensure Switch Control functions correctly.

Remarks:

- In order to use Switch control, make sure that Assistive Touch is disabled.
- Accessibility there are Auto Scanning and Auto Hide options. It is recommended that these options are turned off for the initial set up.
- For detailed description about Bluetooth operation in iOS – See Curtiss-Wright SK81935-02, Chapter 6, Paragraph 2.3.